



AWCF 2024

Stellenbosch, South Africa



**Introducing the
African Wildlife Economy Institute**



Stellenbosch
UNIVERSITY
IYUNIVESITHI
UNIVERSITEIT

AWEI

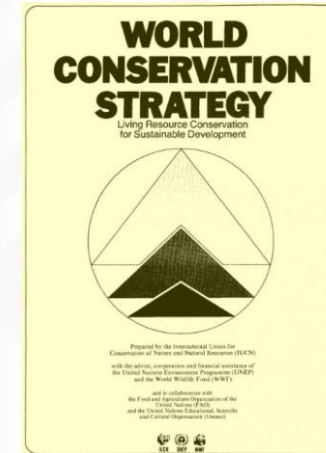
African Wildlife
Economy Institute

The wildlife economy used to be called conservation

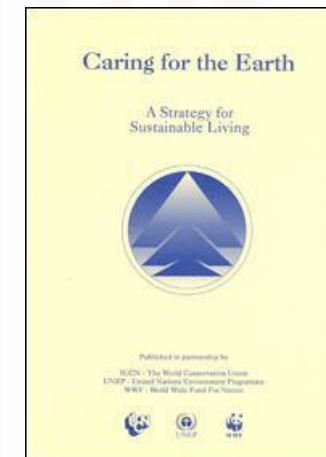
Conservation - The management of human use of the biosphere so that it may yield the greatest sustainable benefit to present generations while maintaining its potential to meet the needs and aspirations of future generations.

Thus, **conservation is positive, embracing** preservation, maintenance, **sustainable utilization**, restoration, and enhancement of the natural environment

Conservation - The management of human use of organisms or ecosystems to ensure such use is sustainable. Besides sustainable use, conservation includes protection, maintenance, rehabilitation, restoration, and enhancement of populations and ecosystems.



IUCN, UNEP & WWF with
FAO & UNESCO
(1980)



IUCN, UNEP, & WWF with
ADB, FAO, IIED,
ILO, UNDP,
UNESCO,
World Bank,
WHO, WMO,
& WRI
(1991)

Conservation *and* sustainable use

Aware that conservation *and* sustainable use of biological diversity is of critical importance for meeting the food, health and other needs of the growing world population...

The objectives of this Convention... are the conservation of biological diversity, the sustainable use of its components, *and* the fair and equitable sharing of the benefits arising out of the utilization of genetic resources...

CBD (1992)



SDG 14 Conserve *and* sustainably use the oceans...

SDG 15 Protect, restore *and* promote sustainable use of terrestrial ecosystems...

Target 15a ...increase financial resources from all sources to conserve *and* sustainably use biodiversity...

2030 Agenda (2015)





GOAL B Prosper with Nature - Biodiversity is sustainably used and managed and nature's contributions to people... are valued, maintained and enhanced...

Target 5 - Ensure that the **use, harvesting** and **trade** of wild species is **sustainable, safe** and **legal**...

Target 9 - Ensure that the **management** and **use** of wild species are **sustainable**, thereby providing social, economic and environmental **benefits for people**...



Linking GBF Targets 5 & 9 to CITES

Ensure that the

- Management
- Use
- Harvest &
- **Trade**

of Wild Species is

- **Sustainable**
- Safe
- **Legal &**
- Benefits people



Elephant leather products

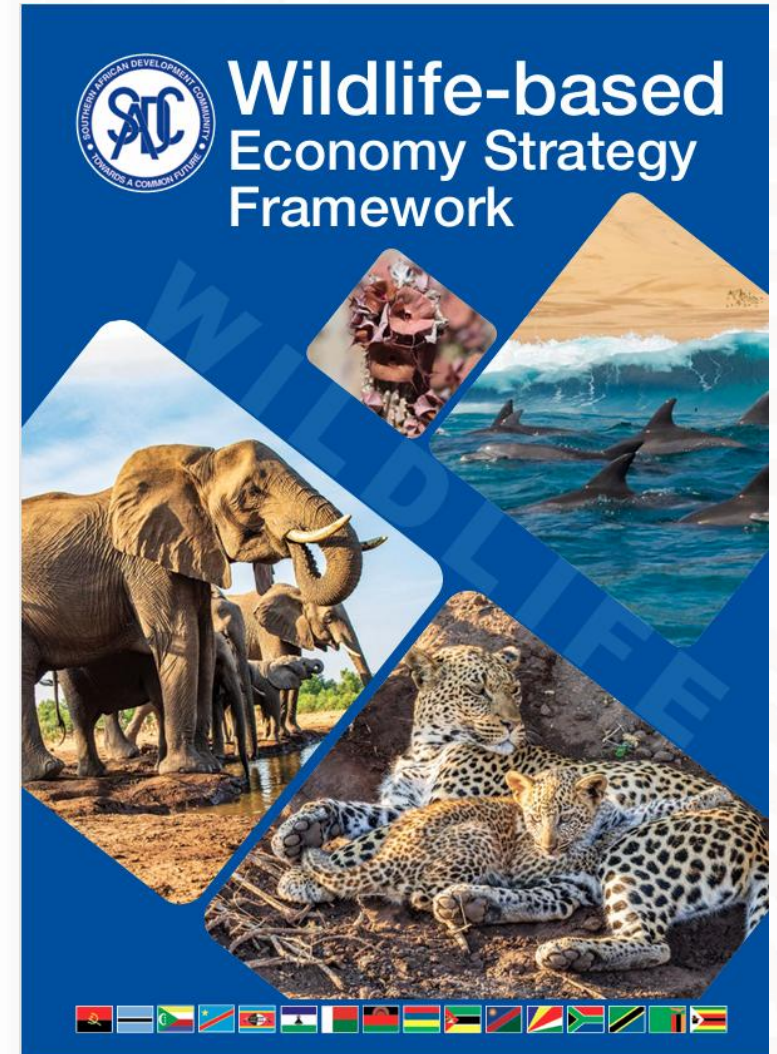
From wildlife conservation to the wildlife economy

Conservation - management of human use of the biosphere so that it may yield the greatest sustainable benefit

(IUCN 1980)

Wildlife Economy – the sector of the economy that uses marine and terrestrial wildlife as an economic asset to create value, which aligns with conservation objectives and delivers sustainable growth and economic development

(SADC 2023)





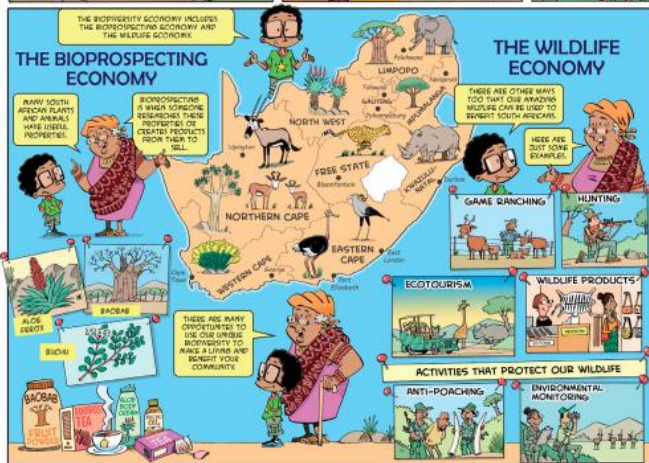
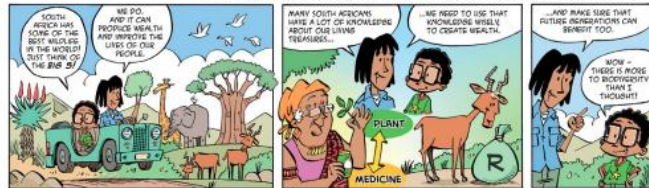
forestry, fisheries & the environment

Department:
Forestry, Fisheries and the Environment
REPUBLIC OF SOUTH AFRICA

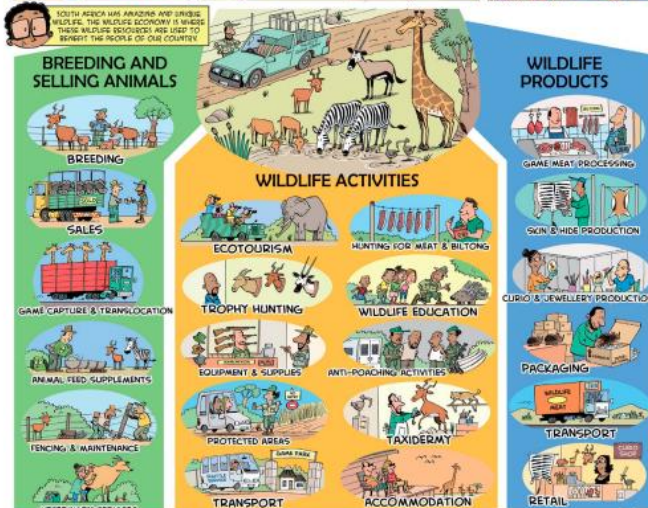
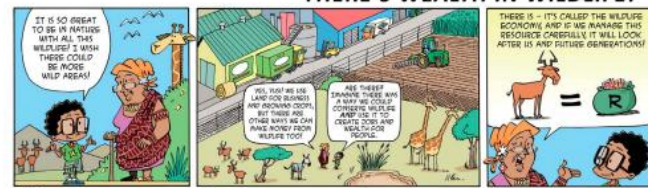
Stellenbosch
UNIVERSITY
IYUNIVESITHI
UNIVERSITEIT

AWEI
African Wildlife
Economy Institute

THE BIODIVERSITY ECONOMY BUILDING BUSINESS FROM BIODIVERSITY



THE WILDLIFE ECONOMY THERE'S WEALTH IN WILDLIFE!



BIOPROSPECTING ECONOMY LIVING TREASURES



THE BIOPROSPECTING VALUE CHAIN



Our work influences, encourages & assists decision-makers to,,,

Strengthen the enabling environment

&

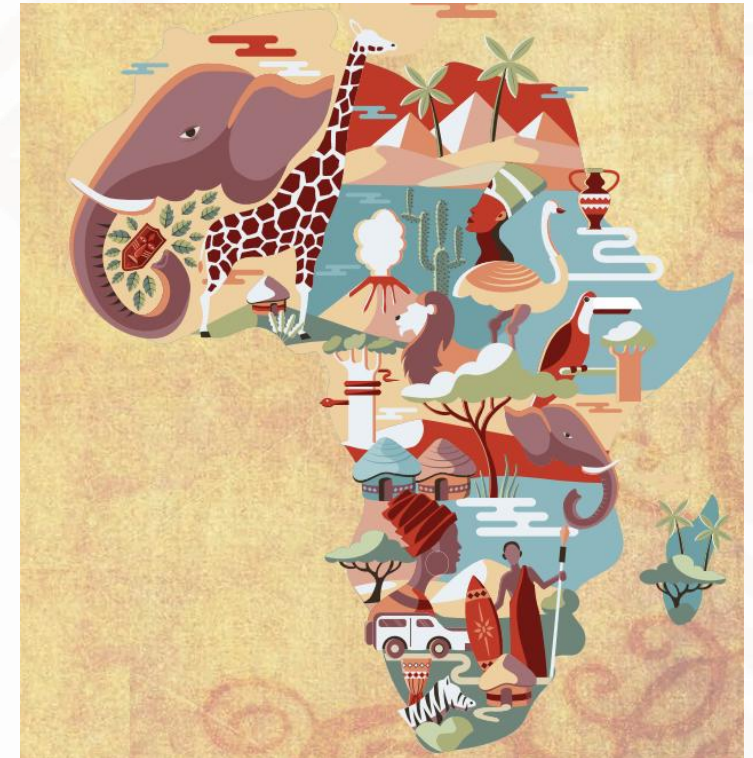
Promote thriving & responsible wildlife enterprise

Leading to...

An inclusive, diversified & flourishing wildlife economy

&

Transformed, enhanced, and maintained African landscapes



Thought leadership

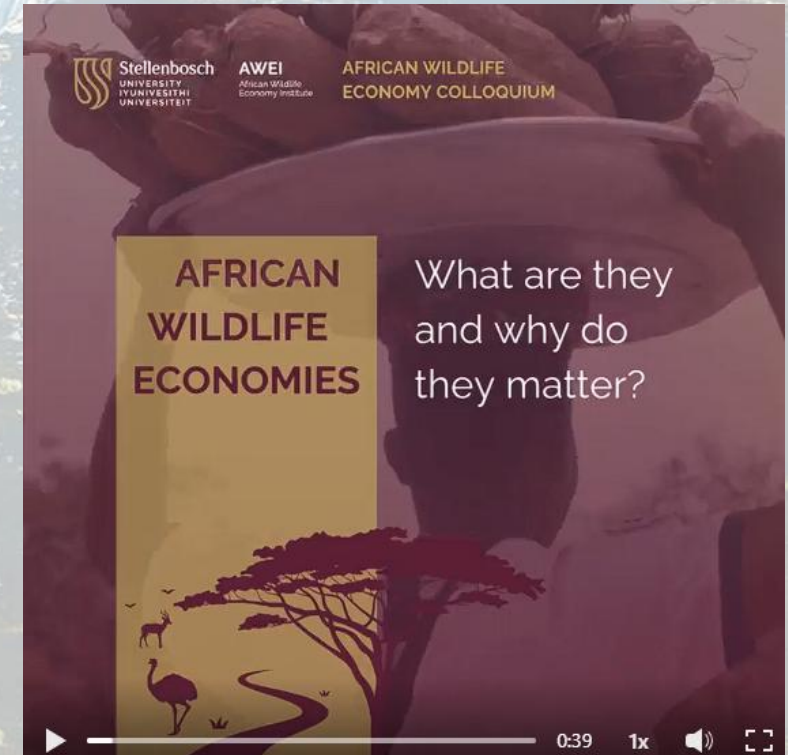
- addressing barriers inhibiting the wildlife economy & identifying opportunities

Stakeholder engagement

- empowering actors to promote the wildlife economy & support wildlife enterprise

Professional development

- strengthening capacity to promote & participate in the wildlife economy



Research framework

Ethical context of the wildlife economy

- values, beliefs & perceptions about the role of wildlife in society

Governance of the wildlife economy

- policies, laws & regulations shaping the structure of the wildlife economy

Functioning of the wildlife economy

- production management, product development, marketing, sales, & finance

Current themes

Wildlife Meat

Wildlife Enterprise

Wildlife Standards

Wildlife Policy

Thought leadership outputs

Short articles	Policy briefs	Research products
Collaborative governance models of wild product value chains for conservation & livelihood resilience	Elephant in the room - Why a trophy hunting ban would hurt conservation & development	Conflict of visions: Ideas shaping wildlife trade policies
Ensuring the use of wild species benefits people	Scaling up Africa's elephant economy	The diverse socioeconomic contributions of wildlife ranching
South Africa's conservation model: why expanding the use of biodiversity to generate money is a good idea	Comments on the draft National Biodiversity Economy Strategy	Supporting business functions influencing the formalization of charcoal business in Tanzania
Natural capital as a potential tool for resolving human-wildlife conflict	Liberalising intra-African trade in wild meat – Policy recommendations	Assessment of the Framework for Tourism Revenue Sharing Schemes in Uganda
Finding balance for a sustainable future: Wild meat consumption, wildlife economy & landscape restoration	CITES, AfCFTA & livelihoods – Implications of the COP 19 appendices proposals	Wild plant value chain analysis of Combretum Micranthum, Opuntia Tuna & Aloe Ferox

Leading the conversation – mailouts & social media



African Wildlife Economy Colloquium
4-6 November 2024
Stellenbosch, South Africa





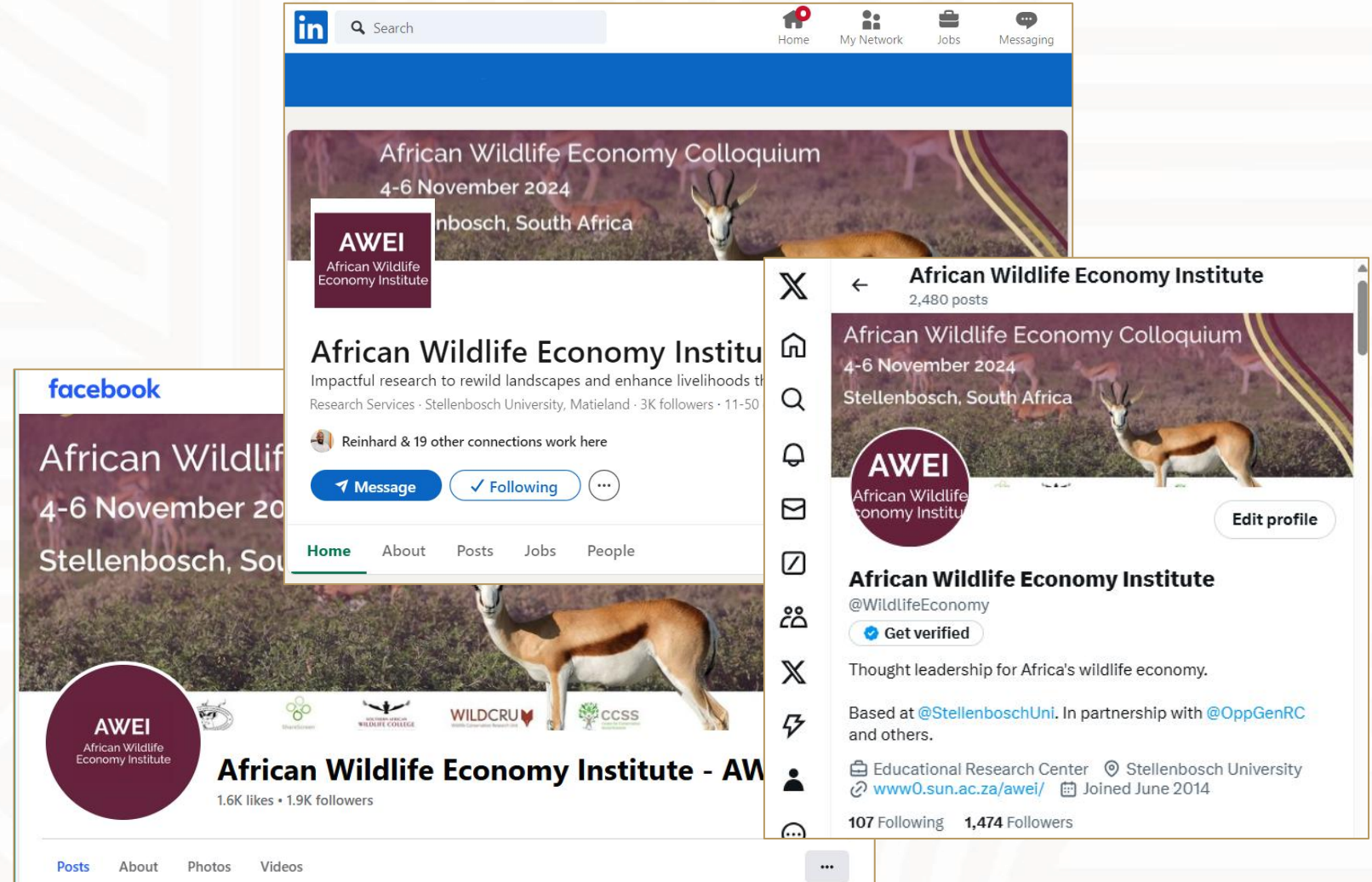
Call for abstracts by 10 September

Don't miss your chance to present at the inaugural African Wildlife Economy Colloquium!

We invite you to join us at the inaugural

AWEI Colloquium Mailer

Sent to 1,114 on Aug 15



LinkedIn Post: African Wildlife Economy Colloquium, 4-6 November 2024, Stellenbosch, South Africa. AWEI African Wildlife Economy Institute. Impactful research to rewild landscapes and enhance livelihoods through research services at Stellenbosch University, Matieland. 3K followers.

Facebook Post: African Wildlife Economy Colloquium, 4-6 November 2024, Stellenbosch, South Africa. AWEI African Wildlife Economy Institute. 1.6K likes • 1.9K followers.

Twitter Profile: African Wildlife Economy Institute (@WildlifeEconomy). 2,480 posts. Thought leadership for Africa's wildlife economy. Based at @StellenboschUni. In partnership with @OppGenRC and others. Educational Research Center, Stellenbosch University. www0.sun.ac.za/awei/. Joined June 2014. 107 Following, 1,474 Followers.

Stakeholder engagement

EVENT



AWEI at APAC (Africa Protected Areas Congress)

18 July 2022 - 23 July 2022
Kigali Convention Centre, Kigali, Rwanda

EVENT




The Conservation Symposium 2023

05 November 2023 - 10 November 2023
Online & at the Wild Coast Sun Hotel, Port Edward, South Africa

The Conservation Symposium brings together practitioners, scientists, and policymakers. It promotes interdisciplinary connections and showcases impactful research. This year's theme is the Biodiversity Economy. [Click here](#) for more information on the conference.



The 2024 Zimbabwe Dialogues

What's next for Zimbabwe's wildlife economy?




Can wild and domesticated species coexist in East Africa?


A series of online dialogues hosted by the African Wildlife Economy Institute (AWEI), Stellenbosch University, in partnership with ShareScreen Africa and Oppenheimer Generations Research and Conservation


Global Baobab Congress

16th April 2024
London, UK

• SCIENCE BEYOND BOUNDARIES •



ORC 2024

Biodiversity
Critical Course
Munira
19-21 October

Invitation BIODIVERSITY ECONOMY AND INVESTMENT INDABA

DEAR STAKEHOLDER,
YOU ARE INVITED TO BE PART OF THE BIODIVERSITY ECONOMY AND INVESTMENT INDABA TO BE HELD AS FOLLOWS:

DATE : 25-27 MARCH 2024
VENUE: BIRCHWOOD HOTEL & CONFERENCE CENTRE, BOKSBURG, GAUTENG



SCAN QR CODE

Theme:
COLLECTIVE ACTION FOR THRIVING NATURE AND PEOPLE
RSVP BY: 19 MARCH 2024

To learn more visit www.dffe.gov.za



EXPLORING EAST AFRICA'S WILDLIFE ECONOMY

A series of online dialogues hosted by AWEI African Wildlife Economy Institute, Stellenbosch University in partnership with School of Wildlife Conservation, African Leadership University ShareScreen Africa and Oppenheimer Generations Research and Conservation

JOIN AT SHARESCREENAFRIA.ORG/EVENTS




Professional development



Researching the wildlife economy

AWEI offers opportunities for in-residence postgraduate research on the wildlife economy at Stellenbosch University.

MSc by research

Applications close mid-September each year, to start at the beginning of the following year

[Learn more](#)

PhD by research

Applications close mid-September each year, to start at the beginning of the following year, or in April to start in the July of the same year

[Learn more](#)

Postdoctoral research

Postdoctoral researchers can start at any time

[Learn more](#)

Introduction to CITES

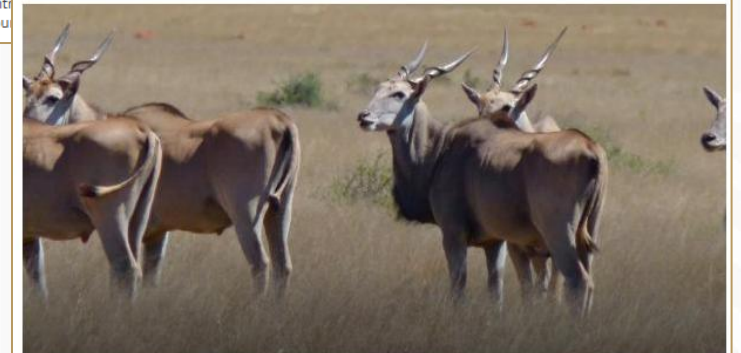
A self-paced learning journey - Version 1

Welcome to Version 1 of an Introduction to CITES - an online learning journey on the Convention on International Trade in Endangered Species of Wild Fauna and Flora (CITES).

With support from the South African National Biodiversity Institute (SANBI), this course has been designed as an induction course for new members of the Scientific Authority of South Africa.

This learning journey will also be of interest to some of the modules, however, there are some modules that are not available. However, if you are from another country, the Scientific Authority operates in your country.

Liberalising intra Africa trade in wild meat



A self-paced AWEI e-learning journey

Developed in partnership with the Atlas Network based on research undertaken by Dr Blandri Joubert

In this one-hour learning journey, you will learn about the African Continental Free Trade Area (AfCFTA) and its Non-Tariff Barriers (NTBs) mechanism. You will also learn that the opportunities offered by the AfCFTA to grow trade in wild meat will be greatly facilitated by identifying and addressing the NTBs that restrict this trade. And you will also be presented with policy recommendations to address NTBs and AWEI's plans for next steps.



Stellenbosch
UNIVERSITY
IYUNIVESITHI
UNIVERSITEIT

AWEI

African Wildlife
Economy Institute

www0.sun.ac.za/awei

awei@sun.ac.za

Thought leadership. Stakeholder engagement. Professional development.