



The Future of African Wildlife Economy



Stellenbosch
UNIVERSITY
IYUNIVESITHI
UNIVERSITEIT

AWEI

African Wildlife
Economy Institute

Scaling the Institute

1

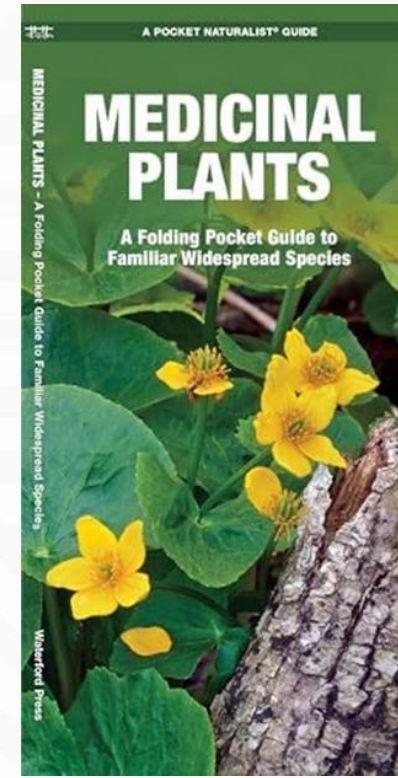
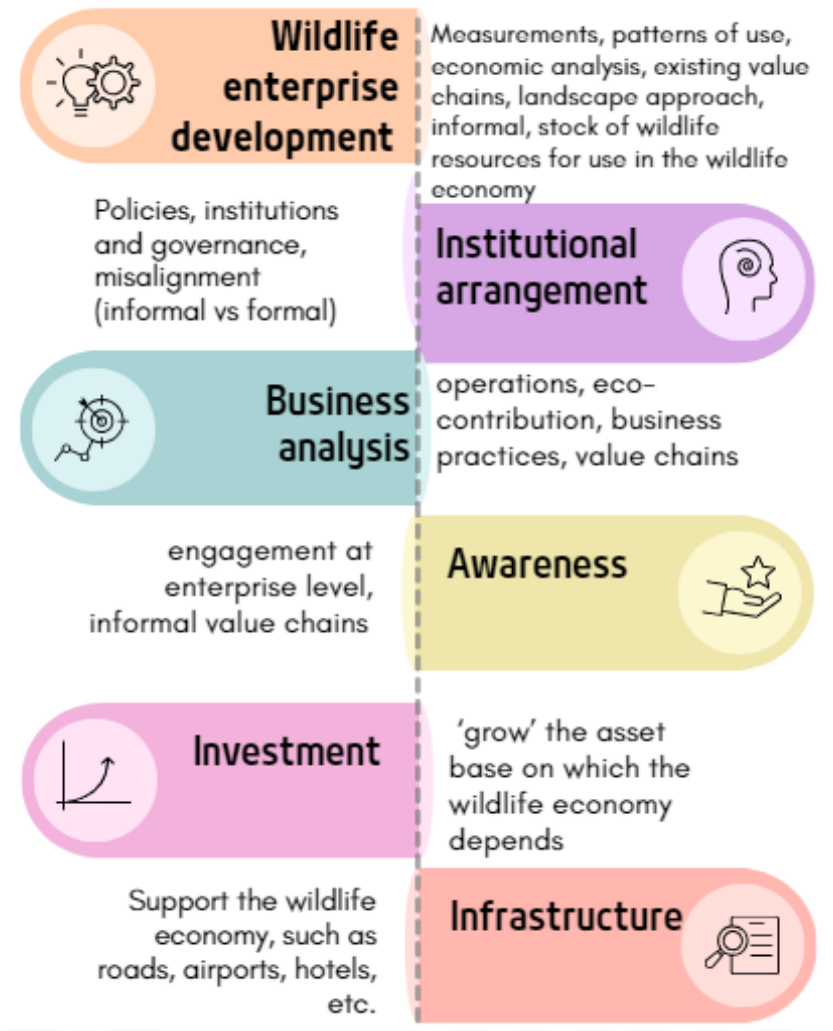
CONTEMPORARY ISSUES IN WILDLIFE ECONOMY

Figure 1: Estimates of biodiversity-related jobs



(Source: National Biodiversity Assessment, 2018)

Wildlife safari industry in Africa = US\$ 12.4 billion



AWEI's evolving wildlife economy programme

sustainable, inclusive, & legal use
of terrestrial and marine species & ecosystems

Thought leadership.

Stakeholder engagement. Professional development.

- **Articles**, - peer reviewed and short articles
- **Policy Briefs** – e.g. AFCTA article-GAS, Elephants, Optimising Veterinary Services for game etc
- **Projects** e.g. Kenya & Somaliland, Tourism Investment,
- **Research** - intra-Afri-trade, wild meat, wildlife ranching,



- **Policy markers**
- **Entrepreneurs**
- **Investors**
- **Communities**
- **Other stakeholders**



- **Capacity Building Programmes** e.g. SANBI – CITES, SADC-WBESF Champions
- **Postgraduates** – Postdocs, PhDs, MScs, and Fellows, Over 8 students
- **Practitioners Capacitation** – entrepreneurs, business skills,



2024

2023

▪ 45 articles

- 3 short courses
- 1 postdoc
- 2 Research Interns
- 40 MSc/PhD application

- 29 events
- 12,538 website users
- 5,500 followers

Director, 25 fellows, COO, Prog. Manager, Jnr operations, 2 comms, 3 interns, Researcher

2022

▪ 45 articles

- 1 short course

- 49 events
- 3,750 website users
- 4,200 followers

Director, 20 fellows, COO, Jnr operations, 2 comms, 4 interns

2021

▪ 20 articles

- 16 events
- 1,248 website users

Director, 14 fellows

